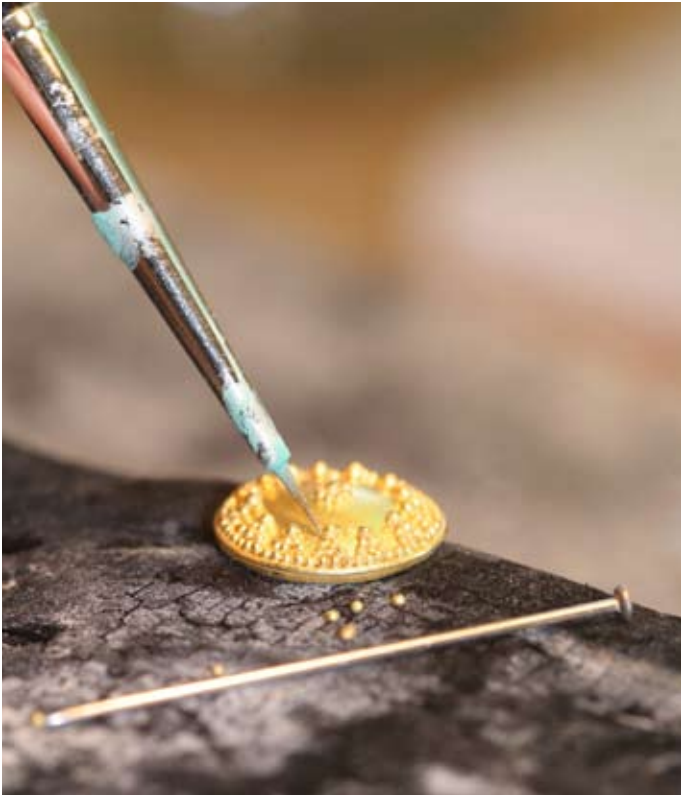


ART IN ACTION

Erica Sharpe will again be demonstrating granulation work at Art in Action – one of the UK's largest art shows – at Waterperry House in Oxfordshire from 19-22 July.

At last year's show, Erica, of Wedmore in Somerset, captivated audiences with demonstrations of gold granulation. She is one of the few British jewellers using this intricate technique devised thousand of years ago by Etruscan goldsmiths.

www.artinaction.org.uk



During her demonstration of granulation Erica will be creating 22ct gold panels which will be used to make earrings and a necklace.

The photo shows a pin in the foreground to depict scale.



MAPLE AND SUMACH

During Art in Action this year Erica's entry for the 'Best of the Best' will be on display in the designated marquee. The piece is a necklace inspired by the poem 'Maple and Sumach' by C Day-Lewis and is crafted from gold, platinum, pink spinels and rubies.